

A world map in shades of blue with a network overlay of lines and dots. The text 'CORD Summit 2016' is centered in white. Other terms like 'NFV', 'SD-WAN', 'DevOps.', '5G', 'LSO', 'OTT', and 'IoT' are scattered in various colors (blue, purple, pink) across the map.

CORD Summit 2016

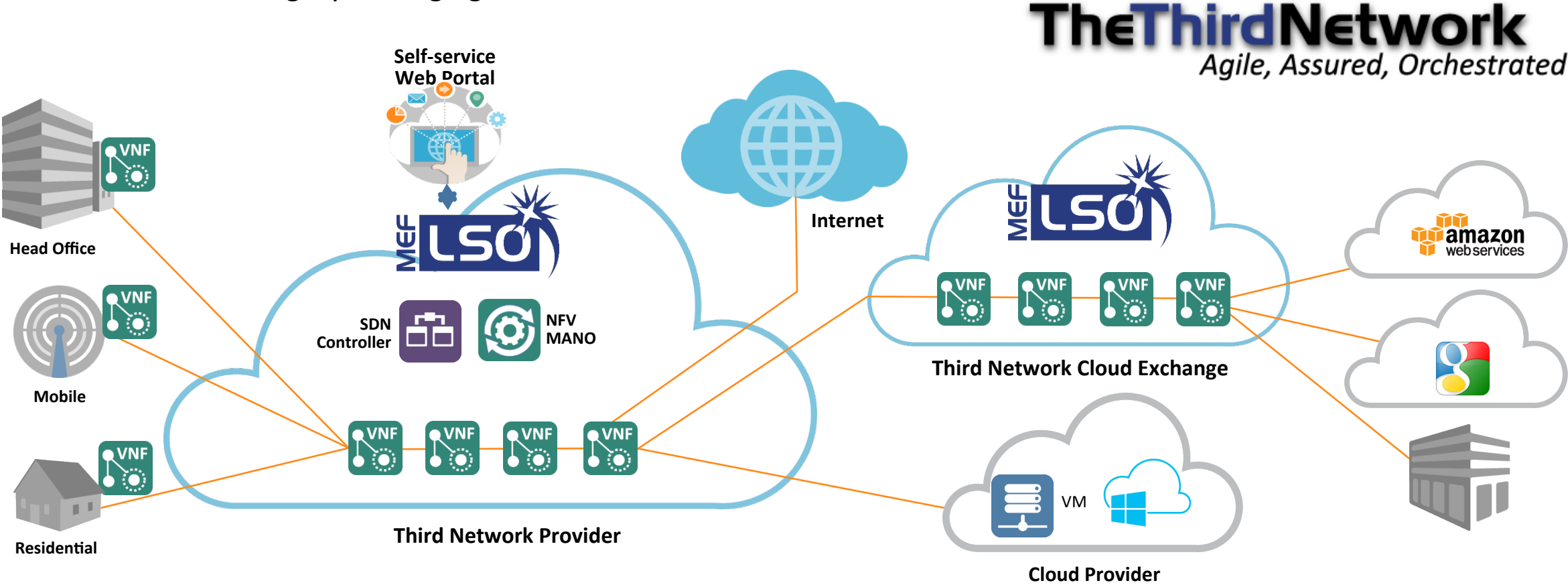
MEF

Plamen Minev

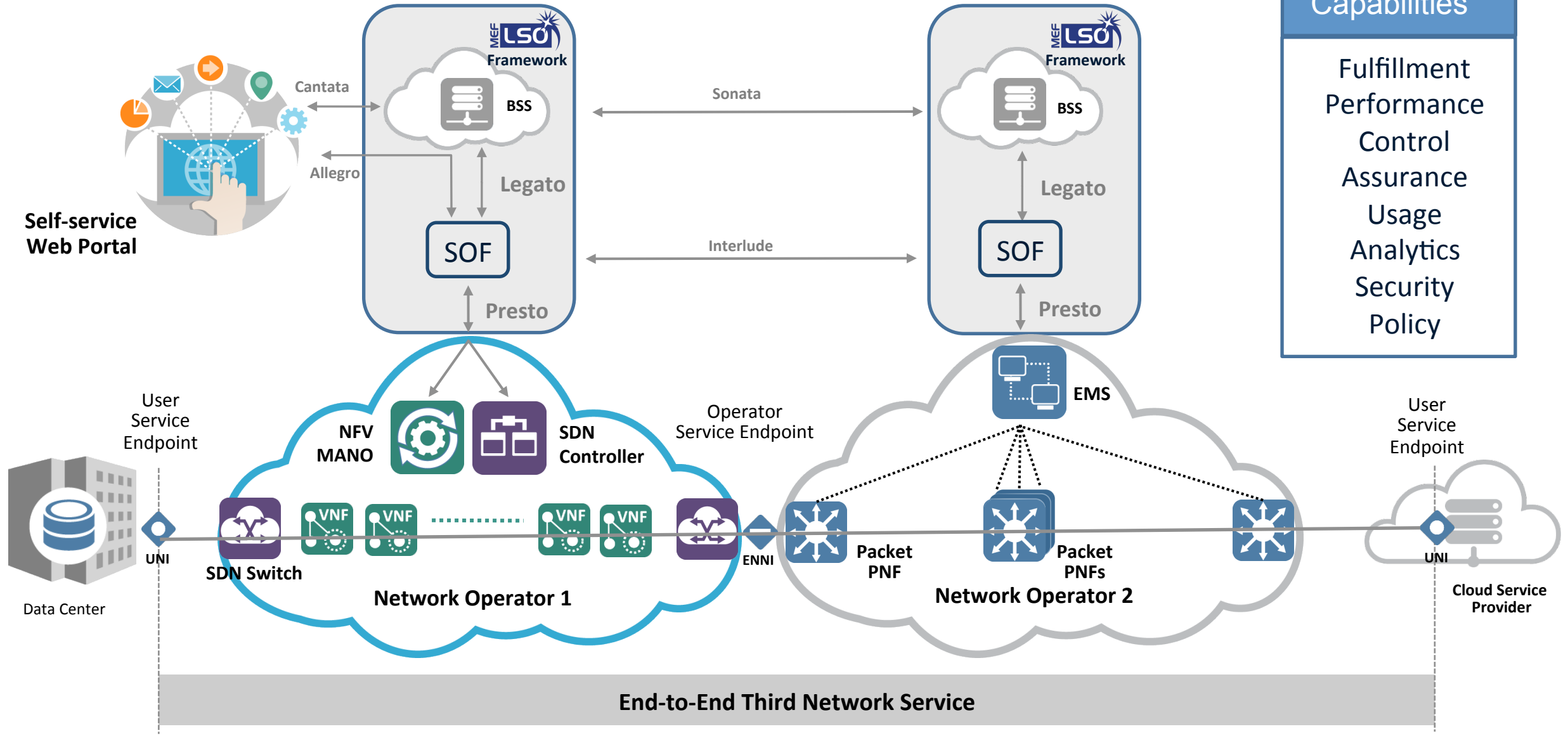
MEF

The MEF Third Network Vision

- CE 2.0 \$80B dollar market to interconnect CE 2.0 providers to create the Third Network
- New MEF defined L3-L7 virtualized and orchestrated services
- Connect to OTT cloud operators
- Orchestration of legacy, emerging SDN/NFV networks and CE 2.0 services



MEF Lifecycle Service Orchestration (LSO)



MEF LSO Capabilities

- Fulfillment
- Performance
- Control
- Assurance
- Usage
- Analytics
- Security
- Policy

MEF Third Network Services

MEF LSO FRAMEWORK



Open LSO APIs

Open LSO APIs

Open LSO Presto APIs

CE 2.0 Orchestrated CE 2.0 Services

E-Line	Access E-Line
E-Access	E-Tree
E-LAN	Transit E-Line

Orchestrated L1-L7 Services

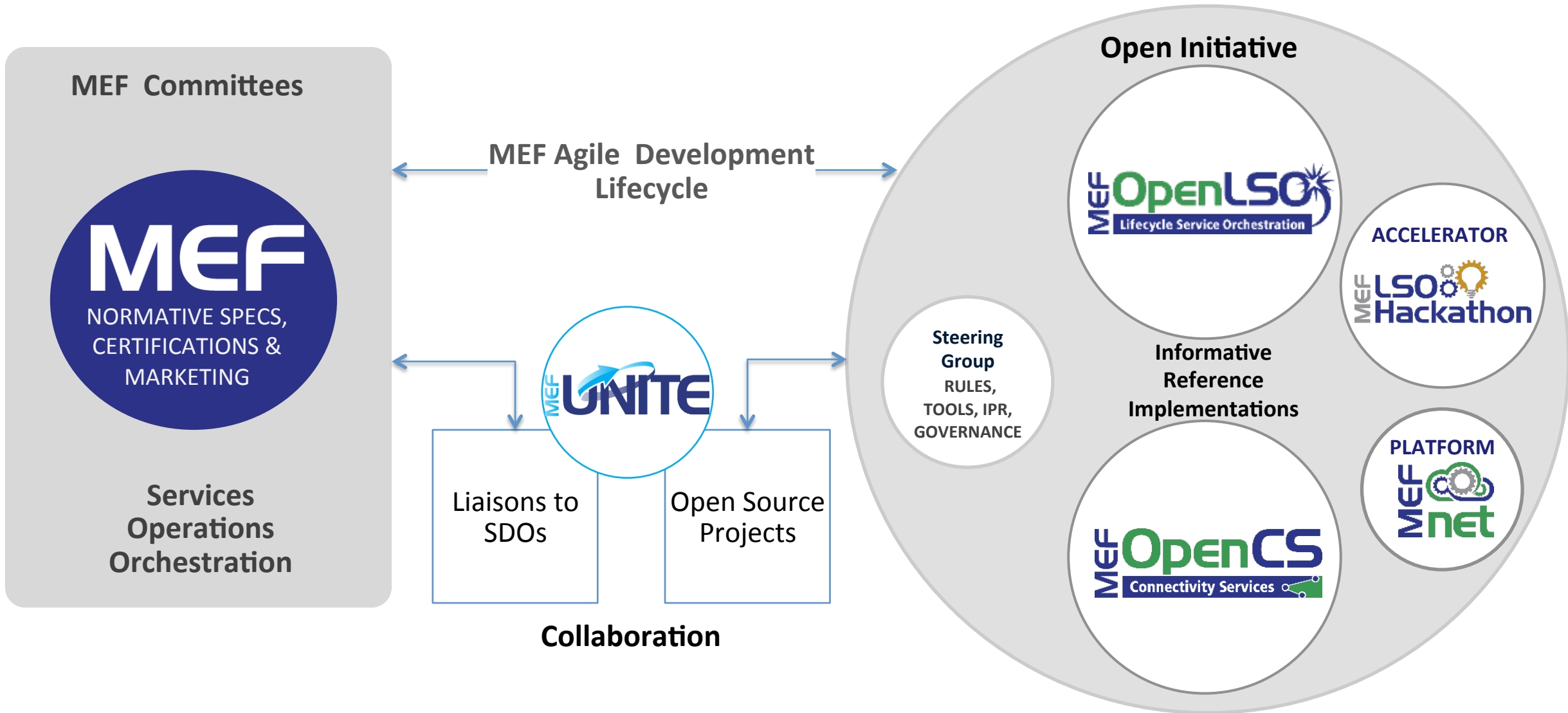
IP	Security
L4-L7 Point Services	Network-as-a-Service (NaaS)
Business Intelligence	Other Services

Orchestrated Telco Cloud Services

OTT Cloud Connectivity	
IaaS	PaaS
SaaS	UCaaS

Bold: Completed or Committed Projects

MEF Open Initiative



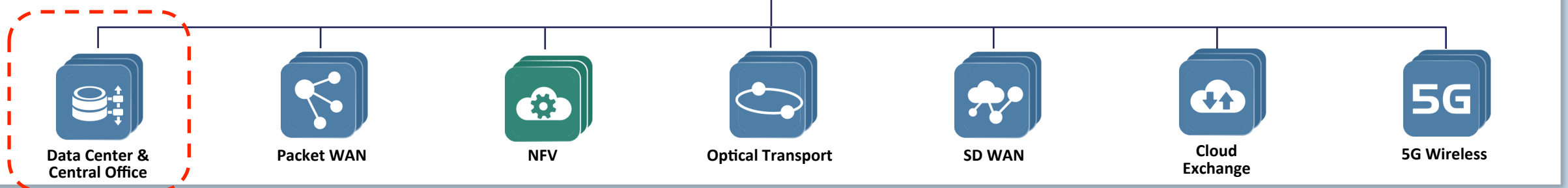
MEF Open Initiative Reference Model



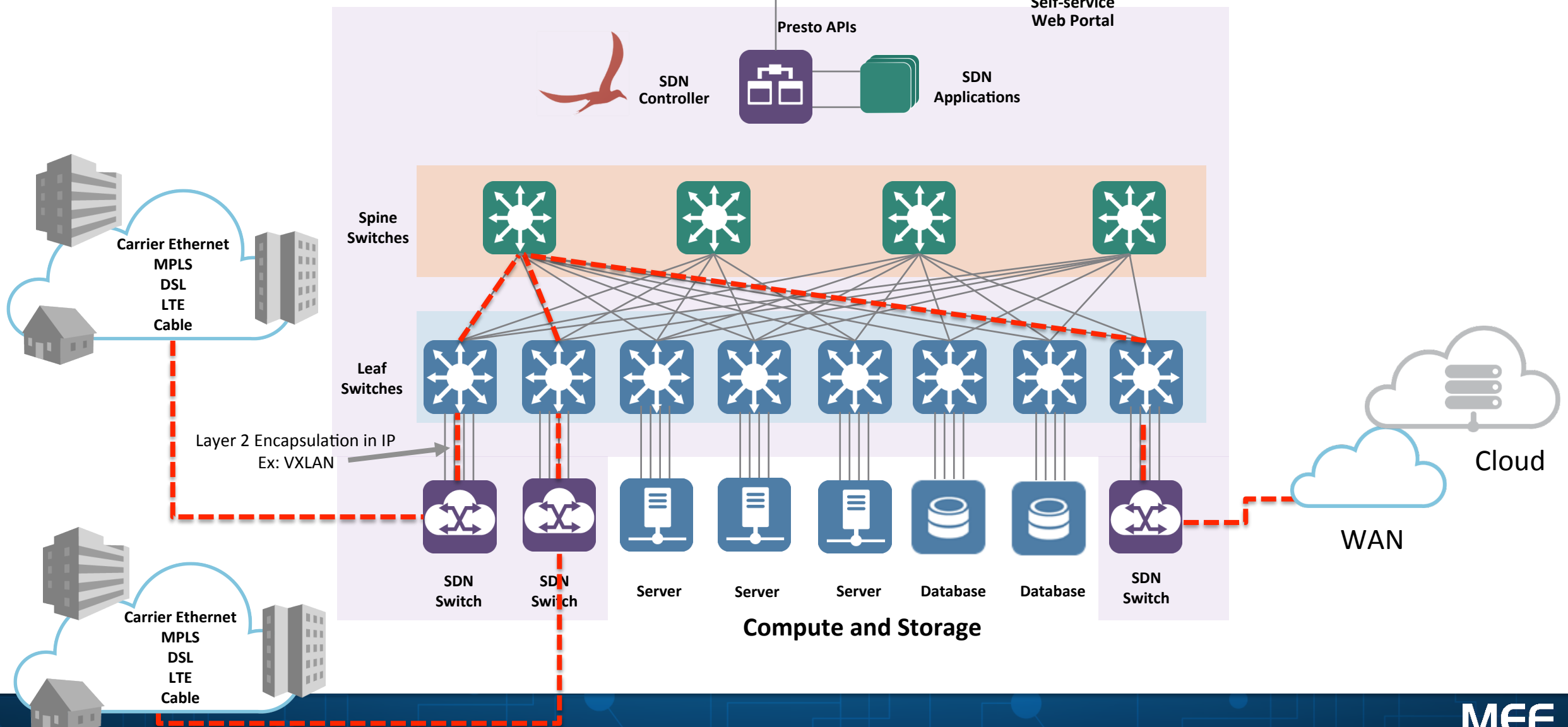
OpenLSO Capabilities



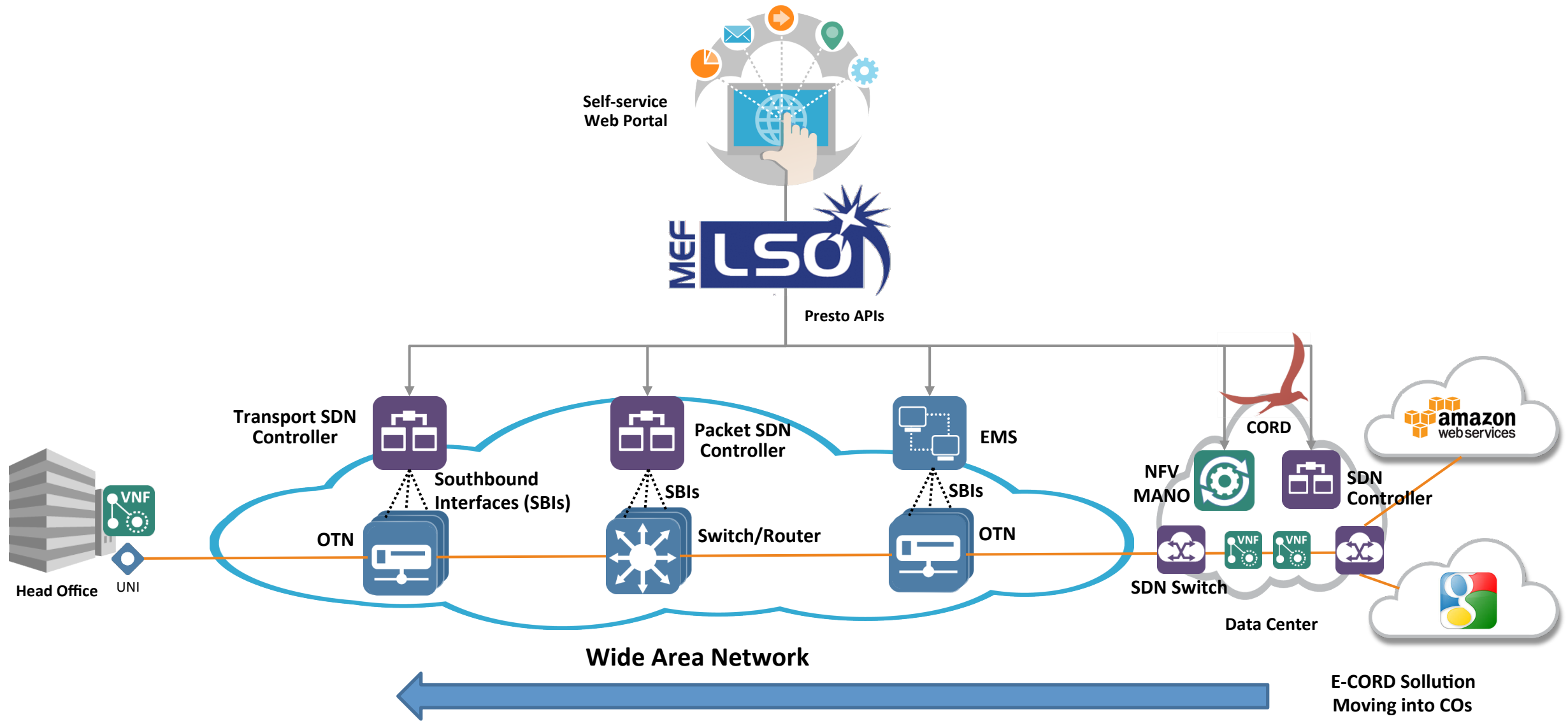
OpenCS Use Cases



OpenCS Data Center Use Case



Third Network & Brownfield Migration Reference Model



MEF Requirements for E-CORD

MEF Work Items:

- MEF is creating Third Network services beyond Carrier Ethernet (IP, NaaS, Security, etc)
- MEF is creating framework, use-cases, information models, operational threads, etc as LSO specifications
 - New LSO APIs will be made available by MEF working with SDOs and open source partners
- MEF is working with upstream orchestration projects like Open-O and others to integrate them into a micro-services LSO platform called OpenLSO

Requirements for E-CORD:

- E-CORD orchestrated via MEF OpenLSO platform (actually all CORD types)
 - Support the MEF set of OpenLSO APIs for E-CORD (Presto, Interlude, etc)
- Deliver on E-CORD telemetry data for analytics via OpenLSO APIs
- Deliver new SDN applications for E-CORD
 - Spine/Leaf Fabric Optimization (delivered)
 - Packet Sniffing for Dev Ops
 - Automated Root Cause Analysis for Dev Ops
 - Business Intelligence (BI) showing end user application performance using E-CORD
- Deliver on a SD-WAN solution for E-CORD

Thank You

MEFV

SDN

Open

DevOps.

IoT

5G

LSO

OTT

MEF

Plamen Mineev

MEF